



Get yourself
a dream
interior home
with classy
French touch!

MA
DECO
ENLIGNE.FR

- Are you building or purchasing a property off-plans?
- You just moved into a new home that does not quite match your tastes?
- You would like to perform modifications or renovation works in order to fully exploit every square inch in your home?

Flash Tips

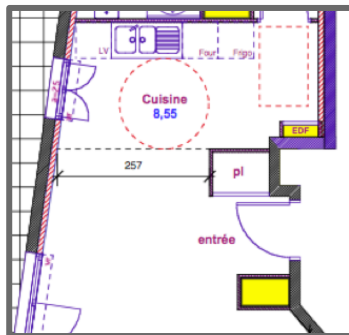
Partial Makeover

Off-Plan Advice

Complete Makeover

1

Send us your current plan and photos (if built) by email



Your plan

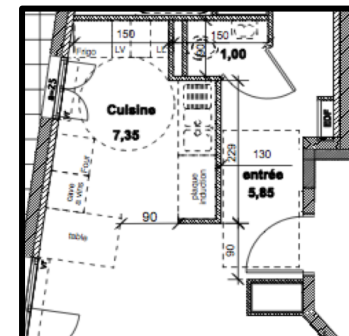
2

Fill out our online questionnaire to get to know you better

Questionnaire

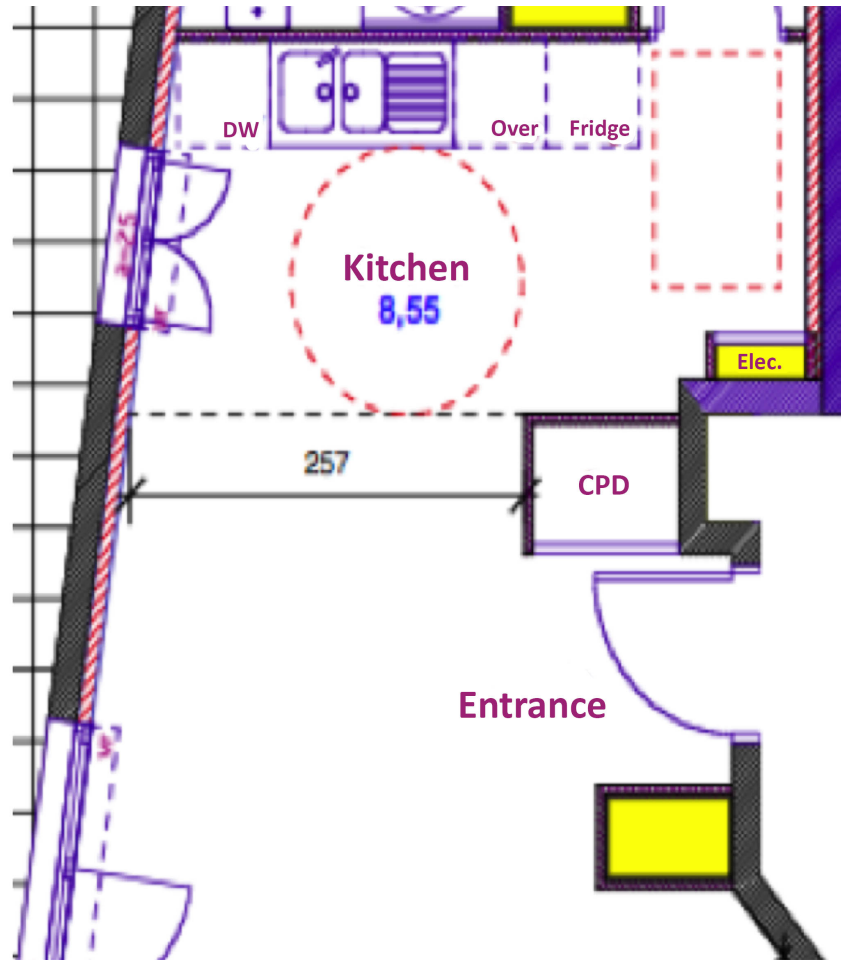
3

Receive your new optimized plan in your inbox!



Your New Plan

BEFORE



- A **kitchen far too small and not well designed for this family apartment** with a 3 meters linear on a single wall, without any chance whatsoever to add nor move any element due to the entrance cupboard awkward placement to boot...
- **Artificial size of 8,55 m2 for the kitchen.** Indeed the layout loses virtually 10 sq.meters of useful space in the apartment in front of all kitchen elements. This space becomes a compulsory passageway facing the 3 meters of kitchen linear.
- **Absence of independent toilets** in the living space of this apartment of 110 sq. meters...!
- An **cupboard** which, albeit useful, stands as a sore point in the middle of the space that one must circumvent to access the night space.

- Complete redesign and new thought-out layout for this kitchen area in order to transform it into a highly **functional practical family kitchen** with an integrated dining space whilst maintaining a visual harmony from the rest of the living space. The 10 sq meters lost space in the original plan has been optimized whilst maintaining a fluid circulation.
- **Creation of a real entrance**, totally inexistent in the initial plan, which includes narrow 20 cm depth cupboards on the left wall with some decoration, discreet cupboards for coats and shoes on the right-hand side along with a practical design cast-iron wall folding chair for everyday use. This new entrance creates a natural link between the day and night spaces.
- **Creation of independent toilets with space-saving wallmounted pan and a hand-wash basin** close to the entrance, absolutely indispensable for any high standing apartment of this size.

